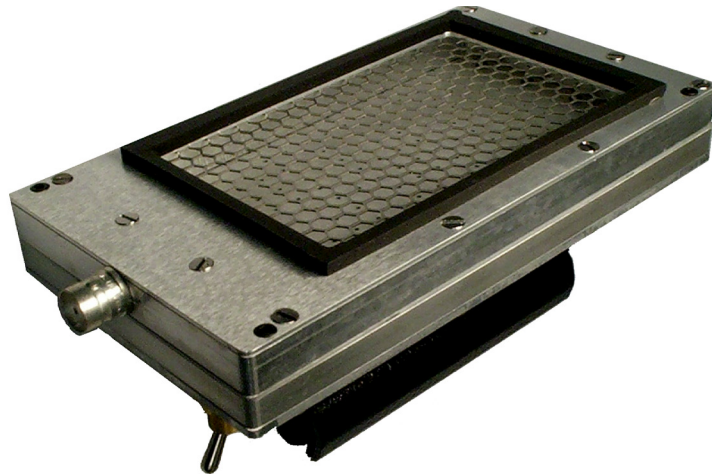


Model 44-110

Large Area Tritium Detector



Ludlum Measurements, Inc.



Specifications

Part Number: 47-2585

INDICATED USE: large area windowless gas flow proportional detector for detecting fixed tritium contamination. Windowless beta survey is designed to be placed on a flat surface and then purged with P-10 gas for 20 seconds before counting.

SUGGESTED INSTRUMENTS: Ludlum Model 12, Model 2000, Model 2200, Model 2221, Model 2350-1, Model 177-61

DETECTOR TYPE: windowless gas flow proportional

EFFICIENCY: 25% of ^3H

RECOMMENDED COUNTING GAS: P-10 (10% methane, 90% argon)

GAS PURGE TIME: approximately 20 seconds

WINDOW: windowless

WINDOW AREA:

Active: 126 cm² (19.5 in²)

Open: 100 cm² (15.5 in²)

BACKGROUND: 400 cpm

OPERATING VOLTAGE: typically 1700 volts

COUNTER THRESHOLD SETTING: typically 4.0 mV

CONSTRUCTION: anodized aluminum housing

TEMPERATURE RANGE: -20 to 50 °C (-4 to 122 °F), may be certified to operate from -40 to 65 °C (-40 to 150 °F)

CONNECTOR: series "C" (others available)

SIZE: 12.4 x 11.7 x 22.9 cm (4.9 x 4.6 x 9 in.) (H x W x L)

WEIGHT: 0.9 kg (2 lb)

Model 44-110 Tritium Detector Accessories

Part Number	Quantity	Description
2310017	1	2-Stage Regulator
13-7836	1	Regulator Output Fitting (1/4 in. FPT to 1/4 in. tube)
22-9689	3	Plastic Fitting Nuts for 1/4 in. vinyl tubing
22-9522	2	Fittings for Flowmeter (1/8 in. MPT to 1/4 in. tubing)
22-9405	1	0.5 to 5 LPM Flowmeter for HIGH Flow Gas Probes such as Model 44-110
22-9514	AR	x feet of 1/4 in. OD vinyl tubing for gas supply and return

Ludlum Measurements, Inc. P.O. Box 810, Sweetwater, Texas 79556

Web: <http://www.ludlums.com> Tel: 800-622-0828 / 325-235-5494 / Fax: 325-235-4672 / Email: sales@ludlums.com

Note: specifications subject to change without notification. We are not responsible for errors or omissions.

April 2019