



Table of Contents

4511-853-1PR : M 44-196 PMT ASSEMBLY ORIGINAL CAP (PAIR)	3
4511-853PR : M 44-196 PMT ASSEMBLY - 2" (PAIR)	3
4384-846PR : M 44-166 PMT ASSEMBLY - 1 1/8" (PAIR)	3
7002-029-05 : TUBE MOUNT SPONGE	3
7002-1023 : EJ560-2" X 1mm OPTICAL PAD	3
4558-618 : M 4525 ESP32-POE ASSEMBLY/MOUNT BOARD	3
2311253 : RCM3750	4
5396-565 : M 4525 MAIN BOARD	4
5396-555 : M 4525 I/O Board	4
5396-933 : M 4525 DET INTERCONNECT BRD	4
5433-392 : BUTTON AUDIO BOARD	4
5517-417 : M 4525 POWER SUPPLY	4
5558-464 : M 4525 POW/CHG BRD	5
4517-627: M 4525 POWER FILTER ASSEMBLY	5
07-6461-1 : M 4525 LCD W/MTA	5
5558-339 : M 4525 SINGLE GAMMA PREAMP BOARD	5
5558-344 : M 4525 DUAL GAMMA PREAMP BOARD	5
22-9201 : POWER SUPPLY-PS-65-13.5	5
5396-552 : M 4525 REMOTE BOARD	6
8517-622 : M 4525 ETHERNET SURGE PROTECTOR	6
4511-469 : M 4525 RIGHT EMITTER ASSEMBLY	6
4511-469L : M 4525 LEFT EMITTER ASSEMBLY	6
4511-456 : M 4525 RIGHT RECEIVER ASSEMBLY	6
4511-456L : M 4525 LEFT RECEIVER ASSEMBLY	6
4517-421 : M 4525 COMPUTER-SIMPLYNUC ELM PC RETROFIT	7
13-8087 : MTA100 4-PIN	7
13-8042 : MTA100 10-PIN	7
13-8157 : MTA100 14-PIN	7
13-8675 : EZ-RJ45 CONNECTOR	7
21-9277 : 1-AMP FUSE 312001P	7

LUDLUM MEASUREMENTS, INC
Radiation Security Division
404 W. 4th St
Sweetwater, Texas 79556
Phone: 800-622-0828 (USA) Fax: 325-235-8768



**DESIGNER AND MANUFACTURER
OF**
*Scientific and Industrial
Instruments*

M 4525 Parts Catalog UPDATED 4/28/2023

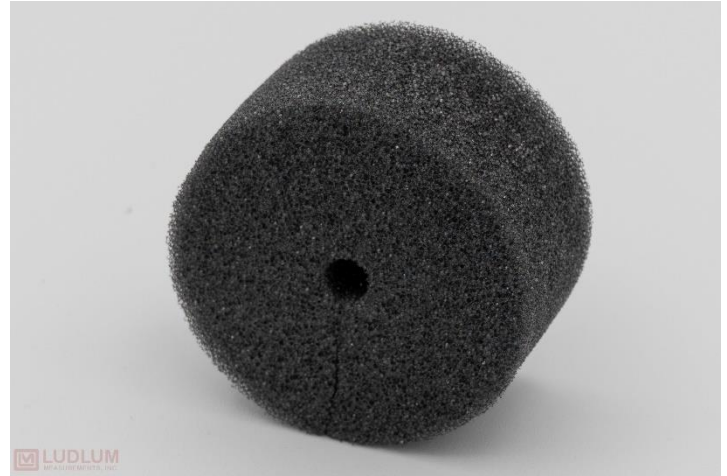
21-9511 : 10-AMP SLOW BLOW FUSE ABC-10-R	8
21-9988 : 2-AMP FUSE 273002	8
14-5221 : GEN IV ENCLOSURE KEY	8
08-6715 : ROCKER SWITCH DM62J12S205PQ	8
08-6812 : PUSH BUTTON MP0038	8
08-6517 : PUSH BUTTON 30-1	8
2310938 : QS30RRX RECEIVER 30' CABLE	9
2310939 : QS30EX EMITTER 30' CABLE	9
2310925 : 12V BATTERY PS-12120 F2	9
21-9855 : FILTER-TYPE IC+202 220V	9



**4511-853-1PR : M 44-196 PMT ASSEMBLY ORIGINAL
CAP (PAIR)**



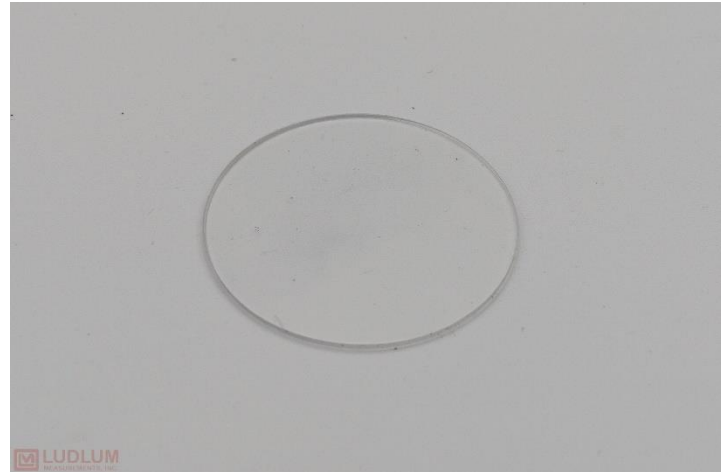
7002-029-05 : TUBE MOUNT SPONGE



4511-853PR : M 44-196 PMT ASSEMBLY - 2" (PAIR)



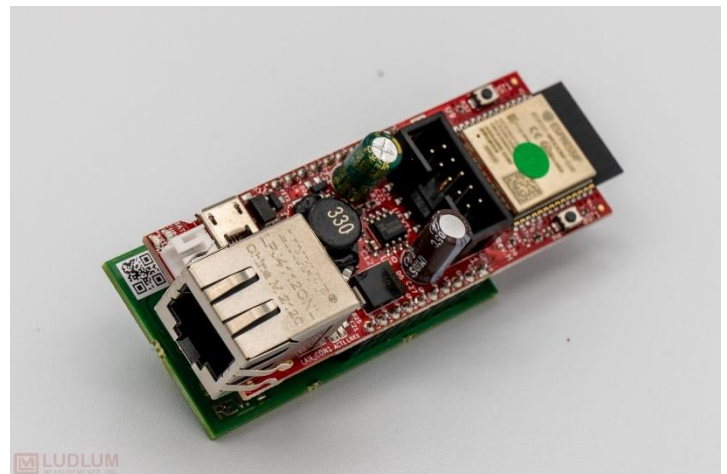
7002-1023 : EJ560-2" X 1mm OPTICAL PAD



4384-846PR : M 44-166 PMT ASSEMBLY - 1 1/8" (PAIR)

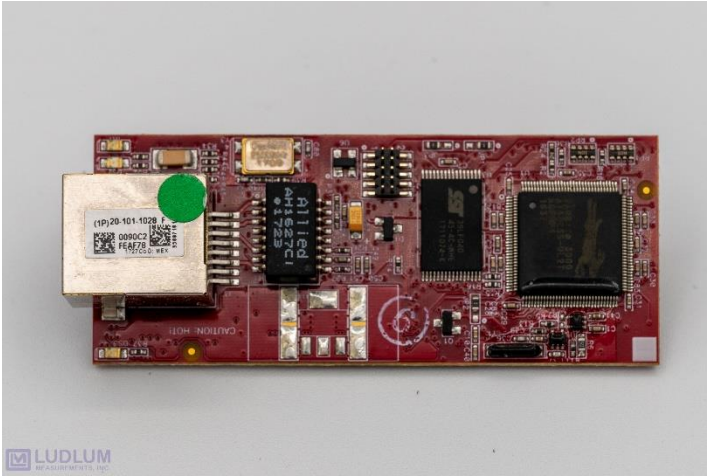


**4558-618 : M 4525 ESP32-POE ASSEMBLY/MOUNT
BOARD**

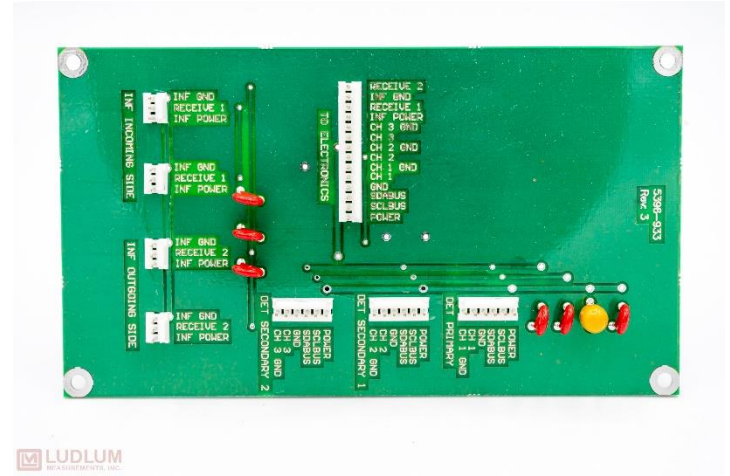




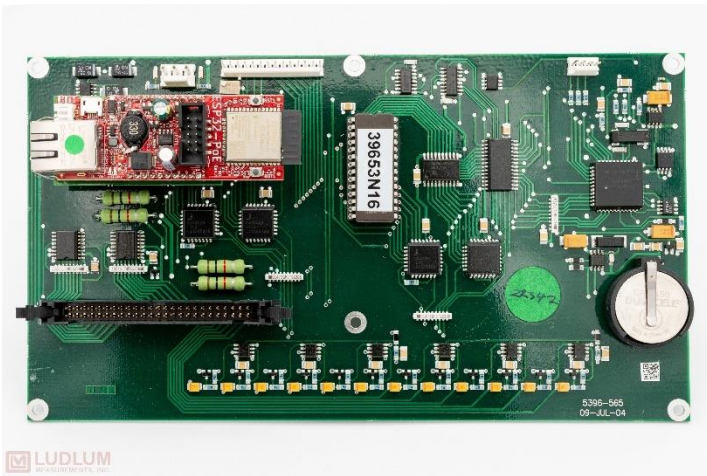
2311253 : RCM3750



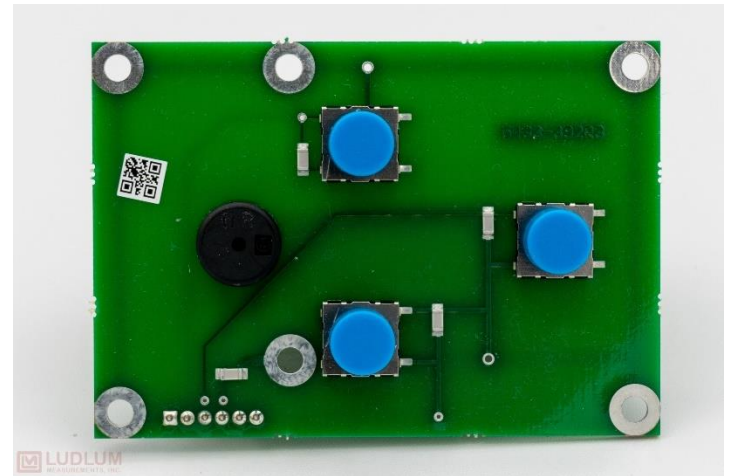
5396-933 : M 4525 DET INTERCONNECT BRD



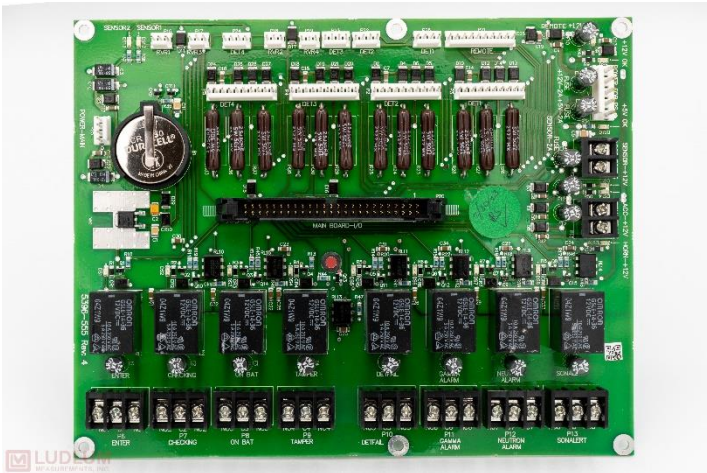
5396-565 : M 4525 MAIN BOARD



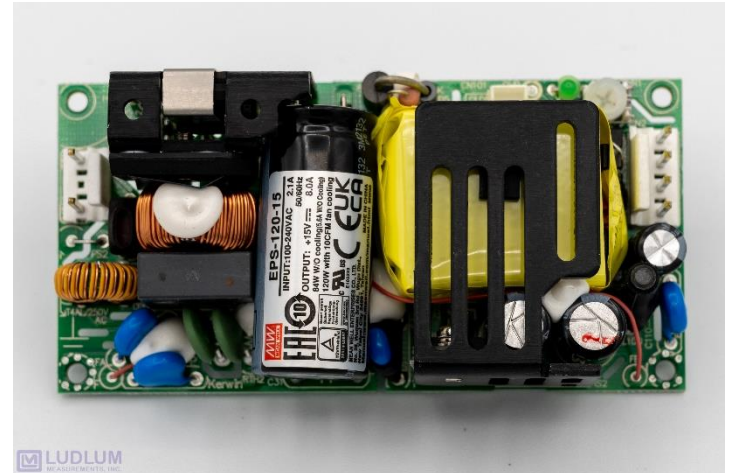
5433-392 : BUTTON AUDIO BOARD



5396-555 : M 4525 I/O Board



5517-417 : M 4525 POWER SUPPLY





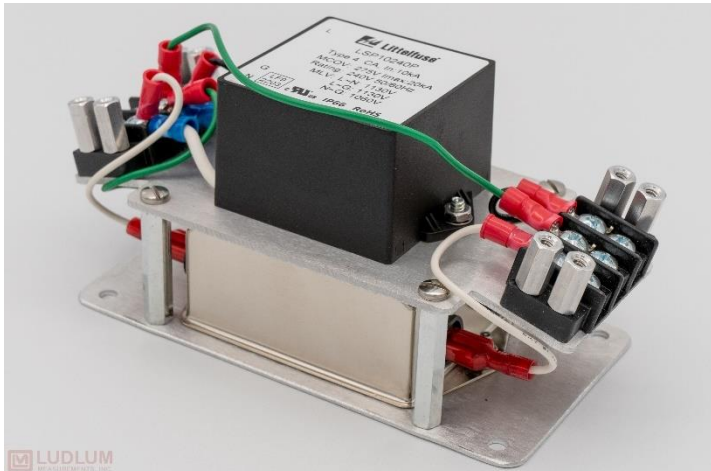
5558-464 : M 4525 POW/CHG BRD



5558-339 : M 4525 SINGLE GAMMA PREAMP BOARD



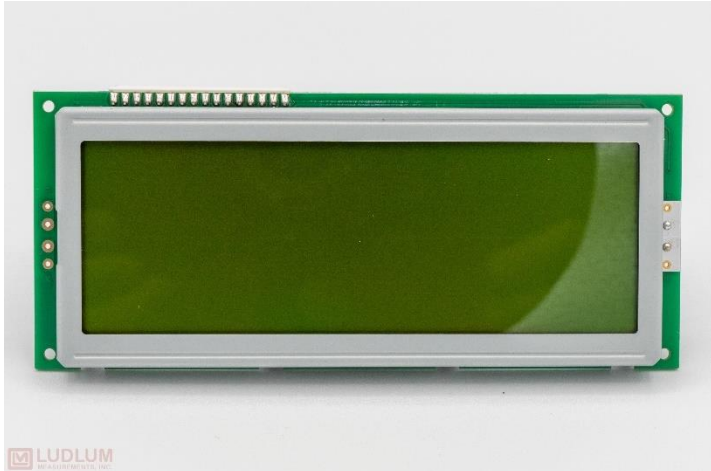
4517-627: M 4525 POWER FILTER ASSEMBLY



5558-344 : M 4525 DUAL GAMMA PREAMP BOARD



07-6461-1 : M 4525 LCD W/MTA

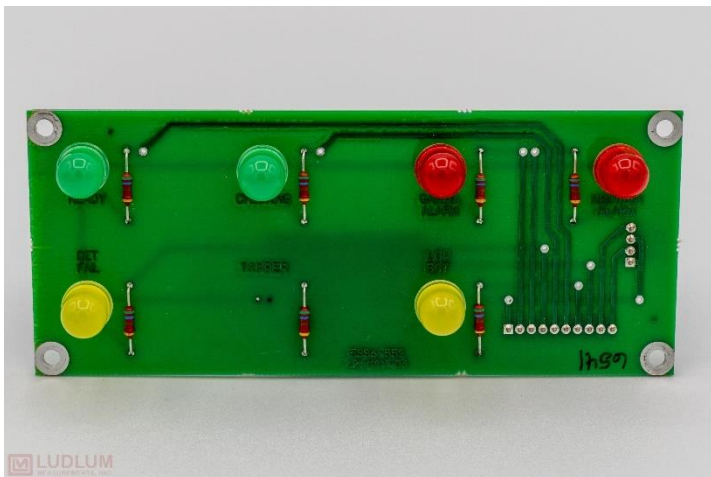


22-9201 : POWER SUPPLY-PS-65-13.5

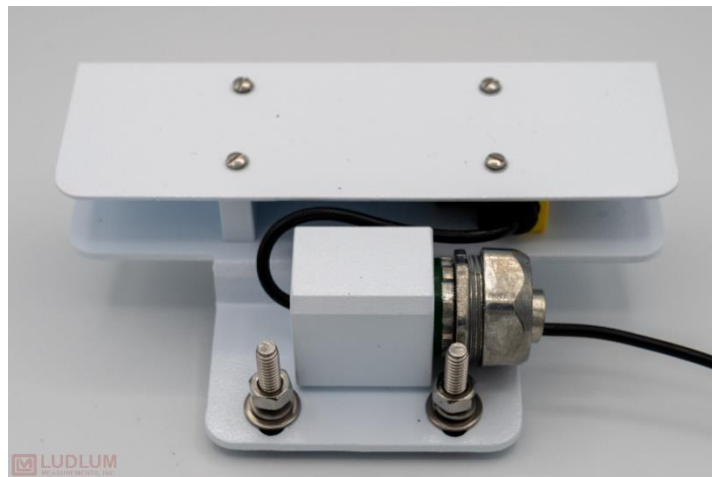




5396-552 : M 4525 REMOTE BOARD



4511-469L : M 4525 LEFT EMITTER ASSEMBLY



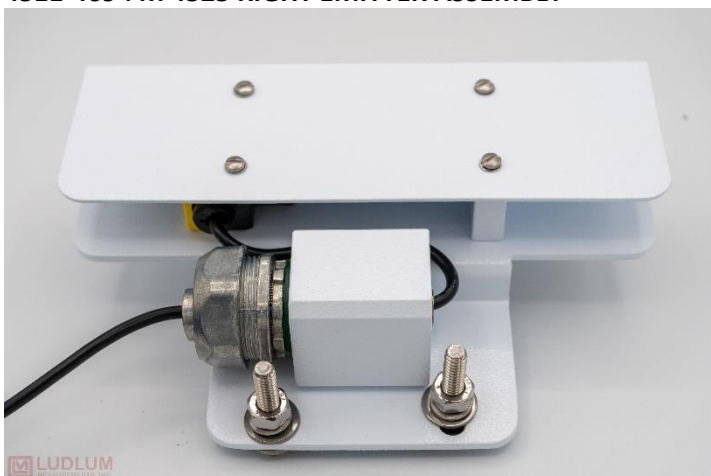
8517-622 : M 4525 ETHERNET SURGE PROTECTOR



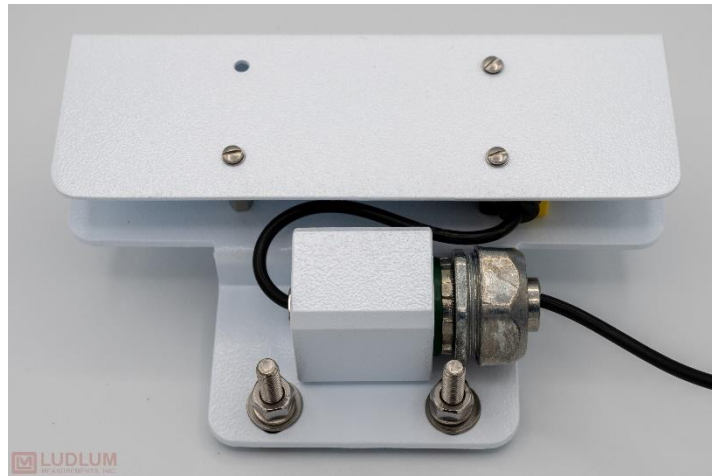
4511-456 : M 4525 RIGHT RECEIVER ASSEMBLY



4511-469 : M 4525 RIGHT EMITTER ASSEMBLY



4511-456L : M 4525 LEFT RECEIVER ASSEMBLY





**4517-421 : M 4525 COMPUTER-SIMPLYNUC ELM PC
RETROFIT**



13-8157 : MTA100 14-PIN



ETE

13-8087 : MTA100 4-PIN



ETE

13-8675 : EZ-RJ45 CONNECTOR



13-8042 : MTA100 10-PIN



ETE

21-9277 : 1-AMP FUSE 312001P





21-9511 : 10-AMP SLOW BLOW FUSE ABC-10-R



08-6715 : ROCKER SWITCH DM62J12S205PQ



21-9988 : 2-AMP FUSE 273002



08-6812 : PUSH BUTTON MP0038



14-5221 : GEN IV ENCLOSURE KEY



08-6517 : PUSH BUTTON 30-1





2310938 : QS30RRX RECEIVER 30' CABLE



21-9855 : FILTER-TYPE IC+202 220V



2310939 : QS30EX EMITTER 30' CABLE



2310925 : 12V BATTERY PS-12120 F2

